



# STT 7036-16

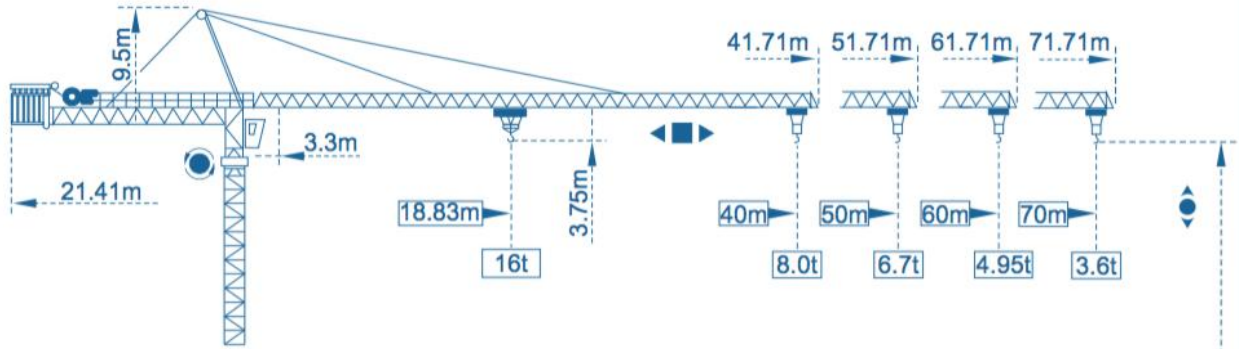
*Experts in the field*



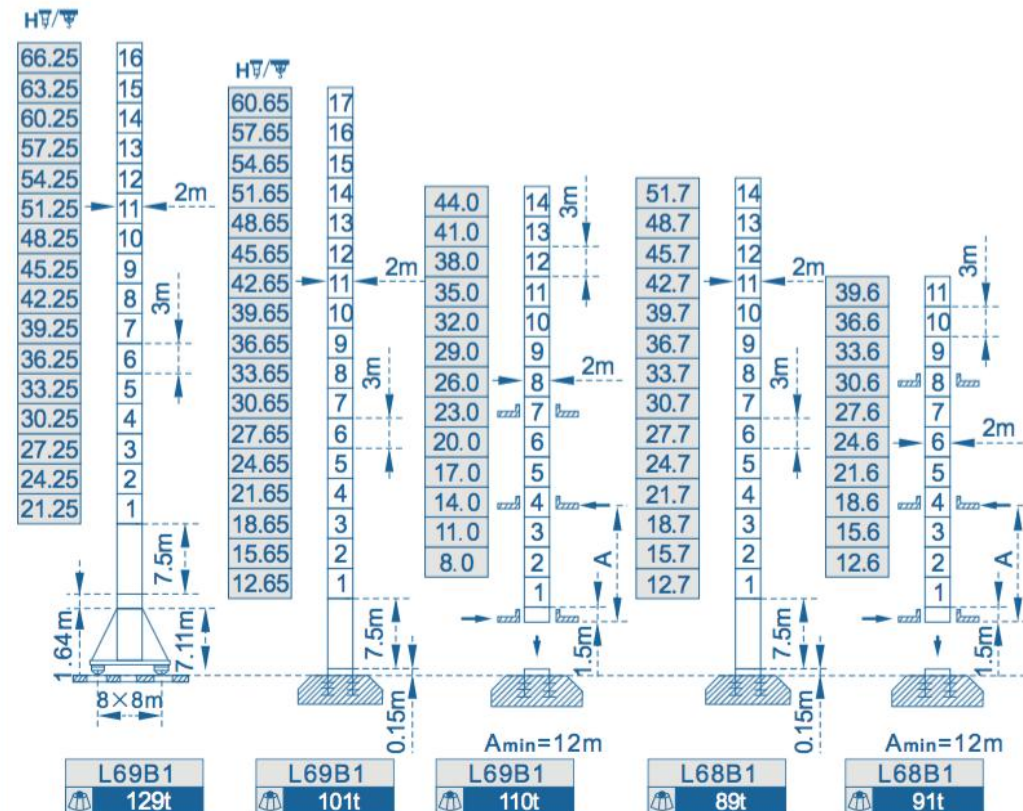
S&Q MART  
SAFETY & QUALITY



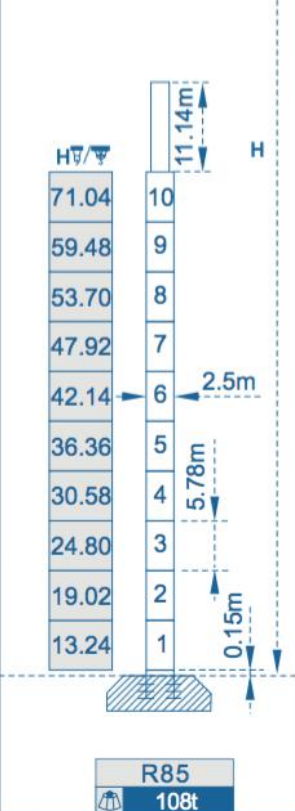
## Outline Dimensions



## Mast $\square$ 2m x 2m



## $\square$ 2.5m x 2.5m

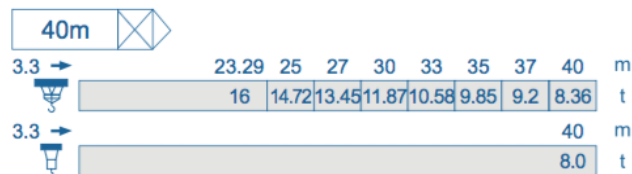
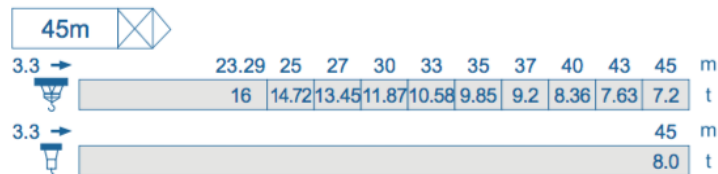
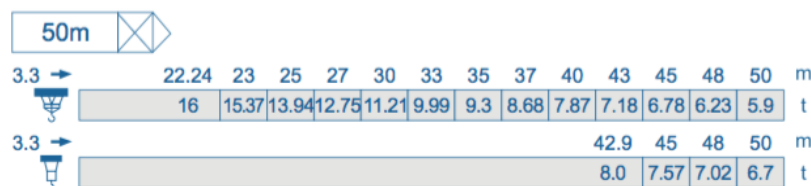
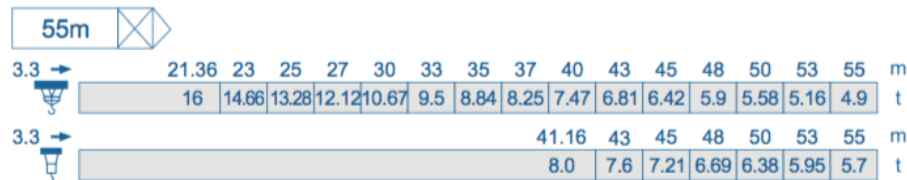
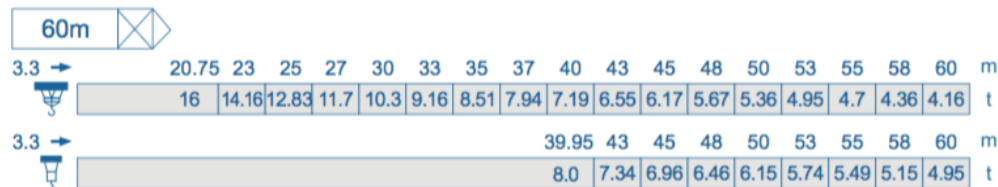
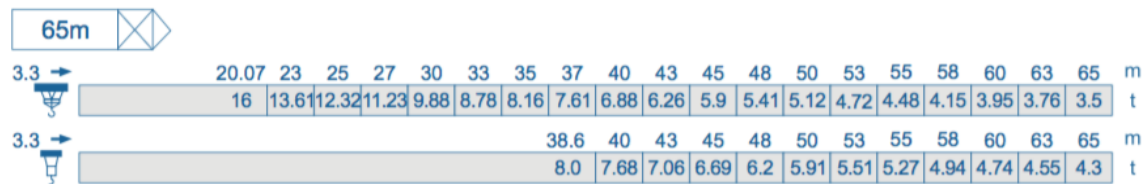
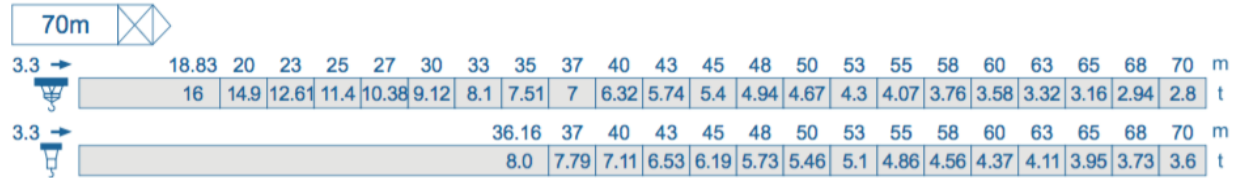


 Without load and ballast with longest jib and maximum height

\* Independent height increased to consult us

## Load diagrams

Jib



Specifications Mechanisms						
Mechanisms	Motor type	Speeds m/min		Capacity t.	Rope lenght	Motor kW
Hoisting	75LVF40R ⬆️	2 fall	0-30	8	600m >600m ★	55
			0-60	4		
		4 fall	0-15	16		
			0-30	8		
	102LVF40F ⬆️	2 fall	0-40	8	700m >700m ★	75
			0-80	4		
		4 fall	0-20	16		
			0-40	8		
	120LVF40F ⬆️	2 fall	0-48	8	590m >590m ★	90
			0-96	4		
		4 fall	0-24	16		
			0-48	8		
150LVF40 ⬆️	2 fall	0-50	8	900m >900m ★	110	
		0-90	4			
	4 fall	0-25	16			
		0-45	8			
Trolleying	XD120K ⬅️▪️➡️			0-40		120N.m
	7DCV ⬅️▪️➡️			0-43		5.5
Slewing	OMD85 ●			0-0.7r/min		2x9
	RCV185E ●			0-0.7r/min		2x185Nm
Travelling	RT443 ⬅️●➡️			0-12.5-25		4x3.4/1.7

★ To be supplied according to client's specific requirements

This commercial documents is not legally bindig.  
For any technical information, please refer to  
the corresponding instructions.

